



# Test Report

No.T32120270697TC

Date: Jul 07, 2021

Page 1 of 7

POLYKOTE INK & PAINT (SHENZHEN) LTD.  
NO. 118, HUANG PU ROAD, SHAJING SUBDISTRICT, BAOAN, SHENZHEN, CHINA (ZIP CODE:518125)

The following samples were submitted and identified by/on behalf of the client as:  
SEE ATTACHMENT

### Attachment:

AIR DRY ENAMEL & INK NO.:	DESCRIPTION:
2326/T/S SERIES	AIR DRY ENAMEL / INK

Case No. : CA321202731419  
Sample Receiving Date : JUN 21, 2021  
Testing Period : JUN 21, 2021 – JUL 06, 2021

Test Requested	Conclusion
European RoHS Directive (EU) 2015/863 amending Annex II to Directive 2011/65/EU (Selected test items as specified by the applicant, please refer to test result page(s) for details)	PASS

\*\*\*\*\* FOR FURTHER DETAILS, PLEASE REFER TO THE FOLLOWING PAGE(S) \*\*\*\*\*

Signed for and on behalf of  
SGS Hong Kong Ltd.



To Man Wah, Po  
Technical Manager

This document is issued by the Company subject to its General Conditions of Service printed overleaf, available on request or accessible at <http://www.sgs.com/en/Terms-and-Conditions.aspx> and, for electronic format documents, subject to Terms and Conditions for Electronic Documents at <http://www.sgs.com/en/Terms-and-Conditions/Terms-e-Documents.aspx>. Attention is drawn to the limitation of liability, indemnification and jurisdiction issues defined therein. Any holder of this document is advised that information contained hereon reflects the Company's findings at the time of its intervention only and within the limits of Client's instructions, if any. The Company's sole responsibility is to its Client and this document does not exonerate parties to a transaction from exercising all their rights and obligations under the transaction documents. This document cannot be reproduced except in full, without prior written approval of the Company. Any unauthorized alteration, forgery or falsification of the content or appearance of this document is unlawful and offenders may be prosecuted to the fullest extent of the law.

Unless otherwise stated the results shown in this test report refer only to the sample(s) tested and such sample(s) are retained for 30 days only.



**Test Results:**
**1. European RoHS Directive (EU) 2015/863 amending Annex II to Directive 2011/65/EU - Wet Chemical for Lead, Cadmium, Mercury, Hexavalent Chromium, PBBs & PBDEs content**

Method :

- For Lead, Cadmium : With reference to IEC 62321-5:2013, analysis was performed by Inductively Coupled Plasma Optical Emission Spectrometer (ICP-OES) / Atomic Absorption Spectrometer (AAS).
- For Mercury : With reference to IEC 62321-4:2013+AMD1:2017, analysis was performed by Inductively Coupled Plasma Optical Emission Spectrometer (ICP-OES).
- For PBB and PBDEs : With reference to IEC 62321-6:2015, analysis was performed by Gas Chromatography Mass Spectrometer (GC-MS)
- For Chromium (VI) : With reference to IEC 62321-7-1:2015, analysis was performed by Ultraviolet Visible Spectrophotometer (UV-Vis)

Test Item	Result (mg/kg)		Reporting Limit (mg/kg)	Permissible Limit (mg/kg)
	1			
Cadmium (Cd)	ND		5	100
Lead (Pb)	ND		5	1000
Mercury (Hg)	ND		5	1000
Hexavalent Chromium (Cr(VI))	ND		5	1000
Hexavalent Chromium by spot test / boiling water extraction (Cr(VI))	--		#	#
<b>Sum of PBBs</b>	ND		--	1000
Monobromobiphenyl	ND		5	--
Dibromobiphenyl	ND		5	--
Tribromobiphenyl	ND		5	--
Tetrabromobiphenyl	ND		5	--
Pentabromobiphenyl	ND		5	--
Hexabromobiphenyl	ND		5	--
Heptabromobiphenyl	ND		5	--
Octabromobiphenyl	ND		5	--
Nonabromobiphenyl	ND		5	--
Decabromobiphenyl	ND		5	--
<b>Sum of PBDEs</b>	ND		--	1000
Monobromodiphenyl ether	ND		5	--
Dibromodiphenyl ether	ND		5	--
Tribromodiphenyl ether	ND		5	--
Tetrabromodiphenyl ether	ND		5	--
Pentabromodiphenyl ether	ND		5	--
Hexabromodiphenyl ether	ND		5	--
Heptabromodiphenyl ether	ND		5	--
Octabromodiphenyl ether	ND		5	--
Nonabromodiphenyl ether	ND		5	--
Decabromodiphenyl ether	ND		5	--
<b>Comment</b>	PASS		--	--

This document is issued by the Company subject to its General Conditions of Service printed overleaf, available on request or accessible at <http://www.sgs.com/en/Terms-and-Conditions.aspx> and, for electronic format documents, subject to Terms and Conditions for Electronic Documents at <http://www.sgs.com/en/Terms-and-Conditions/Terms-e-Documents.aspx>. Attention is drawn to the limitation of liability, indemnification and jurisdiction issues defined therein. Any holder of this document is advised that information contained hereon reflects the Company's findings at the time of its intervention only and within the limits of Client's instructions, if any. The Company's sole responsibility is to its Client and this document does not exonerate parties to a transaction from exercising all their rights and obligations under the transaction documents. This document cannot be reproduced except in full, without prior written approval of the Company. Any unauthorized alteration, forgery or falsification of the content or appearance of this document is unlawful and offenders may be prosecuted to the fullest extent of the law.

Unless otherwise stated the results shown in this test report refer only to the sample(s) tested and such sample(s) are retained for 30 days only.



## Test Report

No.T32120270697TC

Date: Jul 07, 2021

Page 3 of 7

### Specimen Description:

1. Grey paint (2326 /T /S SERIES)

- Note:
- mg/kg = milligram per kilogram
  - MDL = Method Detection Limit
  - ND = Not Detected (lower than MDL)
  - -- = Not Conducted
  - # Positive indicates the presence of Cr(VI) on the tested areas and result be regarded as conflict with RoHS requirement. Negative indicates the absence of Cr(VI) on the tested areas and result be regarded as no conflict with RoHS requirement.
  - The maximum permissible limit is quoted from the EU Directive 2011/65/EU Annex II

This document is issued by the Company subject to its General Conditions of Service printed overleaf, available on request or accessible at <http://www.sgs.com/en/Terms-and-Conditions.aspx> and, for electronic format documents, subject to Terms and Conditions for Electronic Documents at <http://www.sgs.com/en/Terms-and-Conditions/Terms-e-Documents.aspx>. Attention is drawn to the limitation of liability, indemnification and jurisdiction issues defined therein. Any holder of this document is advised that information contained hereon reflects the Company's findings at the time of its intervention only and within the limits of Client's instructions, if any. The Company's sole responsibility is to its Client and this document does not exonerate parties to a transaction from exercising all their rights and obligations under the transaction documents. This document cannot be reproduced except in full, without prior written approval of the Company. Any unauthorized alteration, forgery or falsification of the content or appearance of this document is unlawful and offenders may be prosecuted to the fullest extent of the law.

Unless otherwise stated the results shown in this test report refer only to the sample(s) tested and such sample(s) are retained for 30 days only.

**2. European RoHS Directive (EU) 2015/863 amending Annex II to Directive 2011/65/EU – DEHP, BBP, DBP and DIBP content**

Method : With reference to IEC 62321-8:2017. Analysis was performed by Gas Chromatography / Mass Spectrometry

Test Item	CAS No.	Result (%)	Reporting Limit (%)	Permissible Limit (%)
		1		
Bis-(2-ethylhexyl) Phthalate (DEHP)	117-81-7	ND	0.003	0.1
Benzylbutyl Phthalate (BBP)	85-68-7	ND	0.003	0.1
Dibutyl Phthalate (DBP)	84-74-2	ND	0.003	0.1
Diisobutyl phthalate (DIBP)	84-69-5	ND	0.003	0.1
Comment	--	PASS	--	--

Specimen Description:

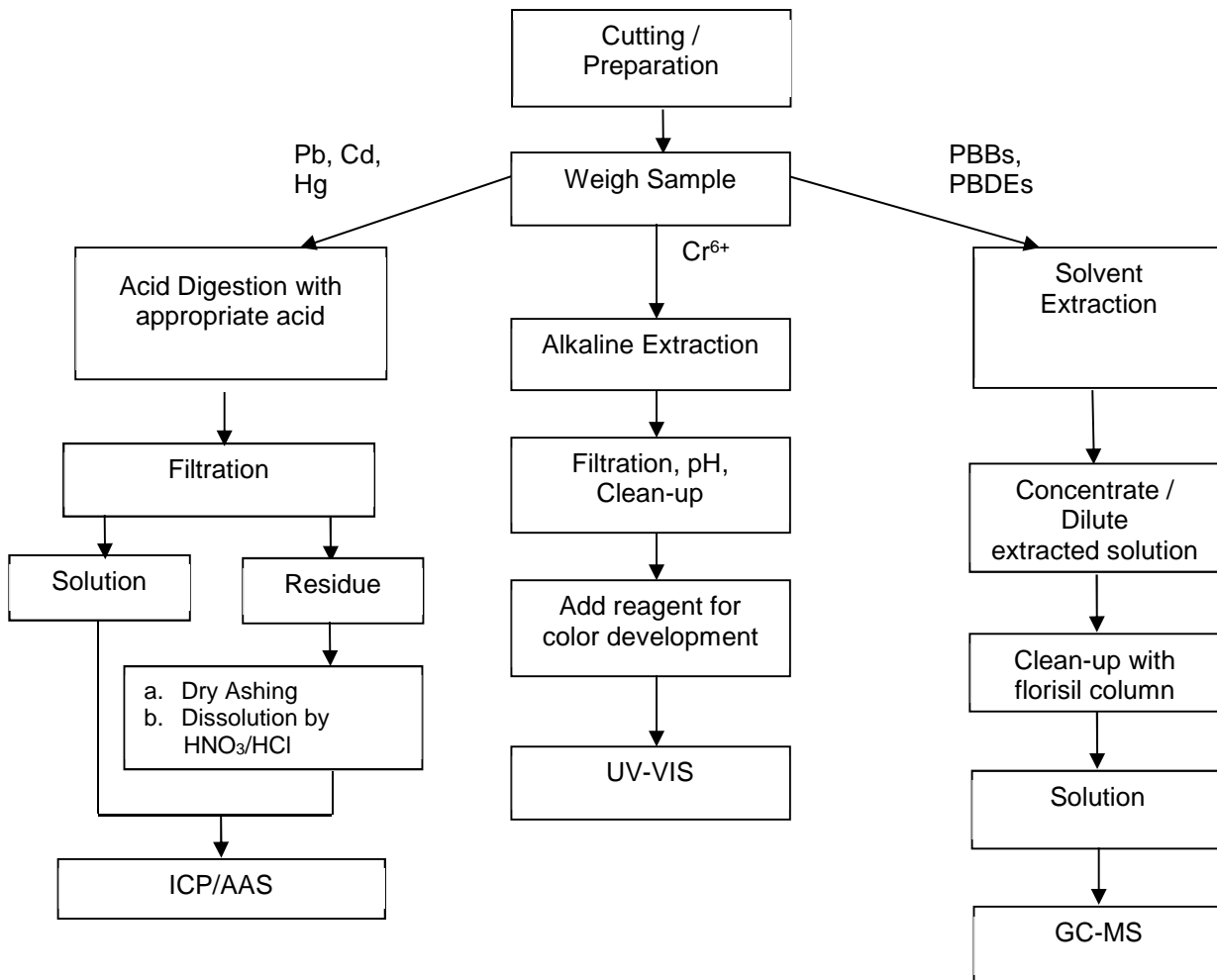
1. Grey paint (2326 /T /S SERIES)

Note : 1. % = percentage by weight  
2. ND = Not Detected

This document is issued by the Company subject to its General Conditions of Service printed overleaf, available on request or accessible at <http://www.sgs.com/en/Terms-and-Conditions.aspx> and, for electronic format documents, subject to Terms and Conditions for Electronic Documents at <http://www.sgs.com/en/Terms-and-Conditions/Terms-e-Documents.aspx>. Attention is drawn to the limitation of liability, indemnification and jurisdiction issues defined therein. Any holder of this document is advised that information contained hereon reflects the Company's findings at the time of its intervention only and within the limits of Client's instructions, if any. The Company's sole responsibility is to its Client and this document does not exonerate parties to a transaction from exercising all their rights and obligations under the transaction documents. This document cannot be reproduced except in full, without prior written approval of the Company. Any unauthorized alteration, forgery or falsification of the content or appearance of this document is unlawful and offenders may be prosecuted to the fullest extent of the law.

Unless otherwise stated the results shown in this test report refer only to the sample(s) tested and such sample(s) are retained for 30 days only.

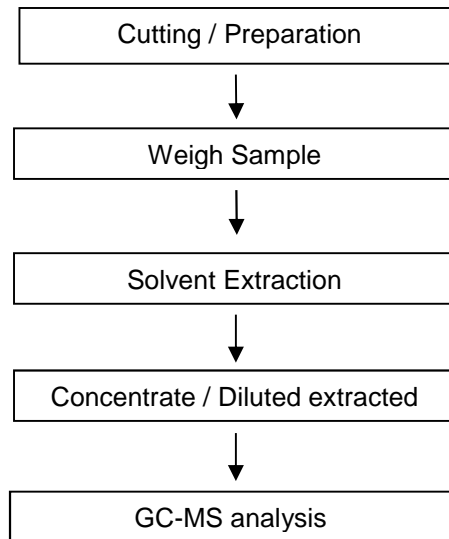
Flowchart:



This document is issued by the Company subject to its General Conditions of Service printed overleaf, available on request or accessible at <http://www.sgs.com/en/Terms-and-Conditions.aspx> and, for electronic format documents, subject to Terms and Conditions for Electronic Documents at <http://www.sgs.com/en/Terms-and-Conditions/Terms-e-Document.aspx>. Attention is drawn to the limitation of liability, indemnification and jurisdiction issues defined therein. Any holder of this document is advised that information contained hereon reflects the Company's findings at the time of its intervention only and within the limits of Client's instructions, if any. The Company's sole responsibility is to its Client and this document does not exonerate parties to a transaction from exercising all their rights and obligations under the transaction documents. This document cannot be reproduced except in full, without prior written approval of the Company. Any unauthorized alteration, forgery or falsification of the content or appearance of this document is unlawful and offenders may be prosecuted to the fullest extent of the law.

Unless otherwise stated the results shown in this test report refer only to the sample(s) tested and such sample(s) are retained for 30 days only.

### Flowchart:



- Note :
1. For Cr(VI), spot test is adopted for metal sample.
  2. The Cd and Pb contents test on polymeric samples were dissolved totally by pre-conditioning method according to above flow chart.

This document is issued by the Company subject to its General Conditions of Service printed overleaf, available on request or accessible at <http://www.sgs.com/en/Terms-and-Conditions.aspx> and, for electronic format documents, subject to Terms and Conditions for Electronic Documents at <http://www.sgs.com/en/Terms-and-Conditions/Terms-e-Document.aspx>. Attention is drawn to the limitation of liability, indemnification and jurisdiction issues defined therein. Any holder of this document is advised that information contained hereon reflects the Company's findings at the time of its intervention only and within the limits of Client's instructions, if any. The Company's sole responsibility is to its Client and this document does not exonerate parties to a transaction from exercising all their rights and obligations under the transaction documents. This document cannot be reproduced except in full, without prior written approval of the Company. Any unauthorized alteration, forgery or falsification of the content or appearance of this document is unlawful and offenders may be prosecuted to the fullest extent of the law.

Unless otherwise stated the results shown in this test report refer only to the sample(s) tested and such sample(s) are retained for 30 days only.

Remark:

- When statement of conformity is made, unless the decision rule was mentioned in above specified test items, the decision rule would be based on the non-binary statement with guard band (is equal to the expanded measurement uncertainty with a 95% coverage probability,  $w = U_{95}$ ) in ILAC-G8:09/2019 Clause 4.2.3.  
 "Pass - the measured value is within (or below / above) the acceptance limit, where the acceptance limit is below / above to the guard band." or "Pass - The measured values were observed in tolerance at the points tested. The specific false accept risk is up to 2.5%."  
 "Fail - the measured value is out of (or below / above) the tolerance limit added / subtracted to the guard band." or "Fail - One or more measured values were observed out of tolerance at the points tested". The specific false reject risk is up to 2.5%.  
 "Inconclusive – It is not possible to state the conformity. Either one or more measured values were observed in the portion of the expanded measurement uncertainty intervals at the points tested where the specific risk is up to 50%."

**Sample Photo:**



SGS authenticate the photo on original report only  
 \*\*\* End of Report \*\*\*

This document is issued by the Company subject to its General Conditions of Service printed overleaf, available on request or accessible at <http://www.sgs.com/en/Terms-and-Conditions.aspx> and, for electronic format documents, subject to Terms and Conditions for Electronic Documents at <http://www.sgs.com/en/Terms-and-Conditions/Terms-e-Document.aspx>. Attention is drawn to the limitation of liability, indemnification and jurisdiction issues defined therein. Any holder of this document is advised that information contained hereon reflects the Company's findings at the time of its intervention only and within the limits of Client's instructions, if any. The Company's sole responsibility is to its Client and this document does not exonerate parties to a transaction from exercising all their rights and obligations under the transaction documents. This document cannot be reproduced except in full, without prior written approval of the Company. Any unauthorized alteration, forgery or falsification of the content or appearance of this document is unlawful and offenders may be prosecuted to the fullest extent of the law.

Unless otherwise stated the results shown in this test report refer only to the sample(s) tested and such sample(s) are retained for 30 days only.